



PHASE



ALPHA



PHASE CONVERTING | 115 V / 230 V | 480 V | CONSTANT PRESSURE VFD
NEMA 3R OUTDOOR ENCLOSURE | 2-10 HP

ALPHA DRIVE

FEATURES

Long Lasting Durability

The the Alpha Drive is built to last. Increased component size with higher ratings reduce heat buildup and electrical stress, improving reliability and extending its lifespan. With our new Alpha Drive you can expect consistent performance under tough conditions.

Single or Three-Phase

The Alpha Drive is designed for versatility, with the capability to run 2-wire, 3-wire, or three-phase motors. This flexibility makes it an ideal solution for a wide range of applications.

Warranty

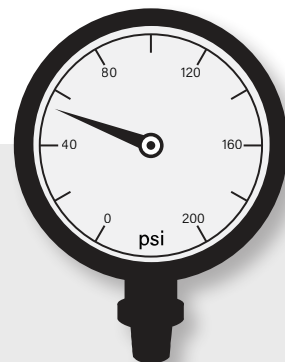
Phase Technologies backs the Alpha Drive with a three-year warranty, including one-year no-questions-asked, ensuring your peace of mind.

Perfect Pressure™

Easy Setup Wizard

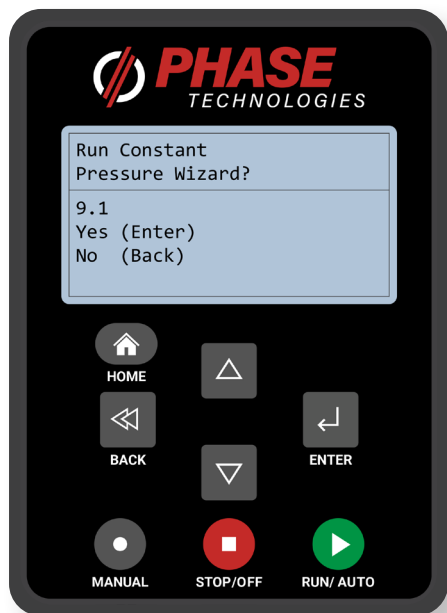
- ▶ Setup Constant Pressure in Minutes
- ▶ Large Backlit Display with Intuitive Menus
- ▶ Simple Messages in Clear English

The Perfect Pressure™ Easy Setup Wizard is a user-friendly tool integrated into our VFDs to simplify the configuration of constant water pressure systems. Upon initial startup, the wizard guides users through a series of prompts to establish the desired settings. This streamlined process allows for quick and efficient setup, often requiring only a few minutes to complete.





DRIVE ATTRIBUTES



Durable Keypad

Enjoy enhanced durability, a superior feel, and improved responsiveness with our new silicone keypad to navigate settings for a straightforward Alpha Drive setup.

Durability & Improved Engineering

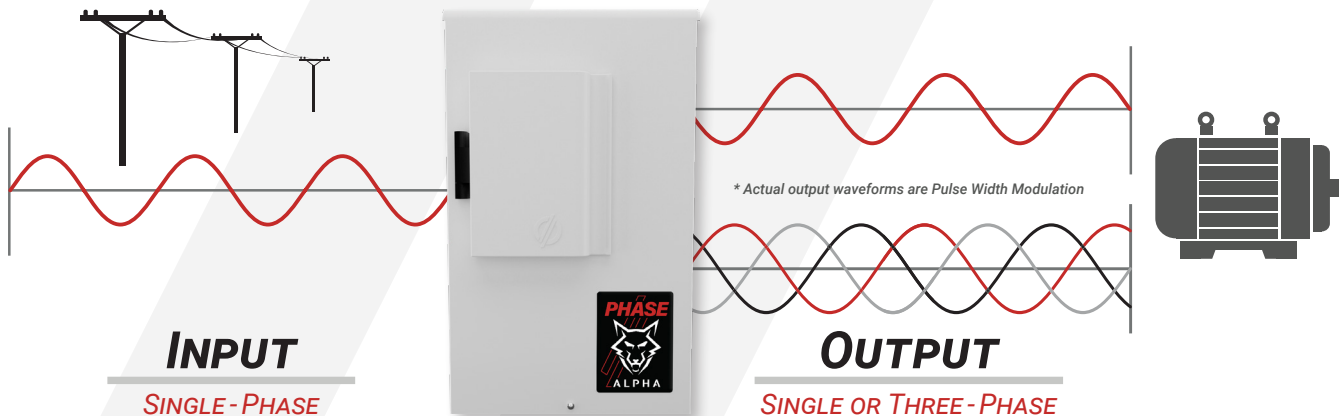
The Alpha Drive is a rugged, high-performance variable frequency drive built for long-lasting durability. Designed to reset the industry standard in residential VFD's, the Alpha Drive features:

- ▶ **50°C (122°F) Temperature Rating**
- ▶ **2x Overload Capacity Compared to Our Competition**
- ▶ **2x Input Transient Voltage Rating Compared to the Competition**
 - Handles Over 1,200 Volts of Transient Peak-to-Peak Voltage
- ▶ **Standard EMI Choke Included**
 - Reduces Light Flickering and Interference with Other Electronics
- ▶ **Standard Output Reactor Included**
 - Designed for Running Single-Phase Motors

Phase Conversion

Single-Phase to Three-Phase

Convert single-phase power to three-phase power while utilizing advanced motor control capabilities and efficiencies.



**Long Lasting
Durability**



**Simple
Constant
Pressure Setup**



**Simple
Installation**



**Easy Setup
Wizards**



NEMA 3R
(Outdoor Enclosure)

Product Specifications

	Model / Part Number	Rated Current (Output)	Rated Current (Input)	Horsepower	Input Voltage	Motor Type
115 V / 230 V	AD002R	9 A	20 A	2 HP	120 V - 240 V	Single & Three-Phase
	AD003R	12 A	30 A	3 HP	120 V - 240 V	Single & Three-Phase
	AD005R	20 A	47 A	5 HP	120 V - 240 V	Single & Three-Phase
	AD007R ¹	31 A	73 A	7.5 HP	120 V - 240 V	Single ¹ & Three-Phase
480 V	AD405R	9 A	22 A	5 HP	480 V	Three-Phase
	AD407R	13 A	31 A	7.5 HP	480 V	Three-Phase
	AD410R	18 A	43 A	10 HP	480 V	Three-Phase

All Models Include Input and Output Filters and 4-20 mA Pressure Transducer for Accurate Analog Pressure Readings

¹Will **NOT** Run 2-Wire Motors

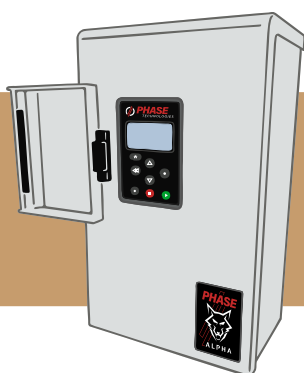
CONSTANT PRESSURE SYSTEM

The Alpha Drive is engineered to maintain consistent water pressure throughout your home, regardless of demand. Unlike traditional systems that are subject to pressure fluctuations and weak flow as demand increases, the Alpha Drive dynamically adjusts speed and flow to ensure steady, reliable water pressure at all times.

With support for both single-phase and three-phase motors, the Alpha Drive offers solutions for a range of motor applications. No matter your residential water system needs, we deliver an all-in-one package for reliable performance, efficiency, and longevity.

Alpha Drive Solutions

- ▶ Constant pressure throughout your home, no matter the water demands
- ▶ Longevity of pump and motor
- ▶ Consistent reliability regardless of conditions
- ▶ Simple setup



ALPHA DRIVE

